



ABOUT MAGNUM

Magnum is a privately owned company established in 1997, with its corporate headquarters in Gurgaon and branch sales and service offices in Mumbai, Kolkata, Bangalore, and Chennai.

At Magnum, we specialize in delivering end-to-end projects — from design and implementation to dependable after-sales service and long-term technical support for advanced security and technology solutions.

The company is led by qualified professionals with more than 35 years of collective industry experience and has been providing services to the corporate sector, government establishments, hospitality industry, educational institutions, and financial organizations.

Magnum has a dedicated team of more than 100 highly trained sales, pre-sales, and service professionals who understand, design, deliver, and implement every project efficiently while ensuring reliable service support at every stage.

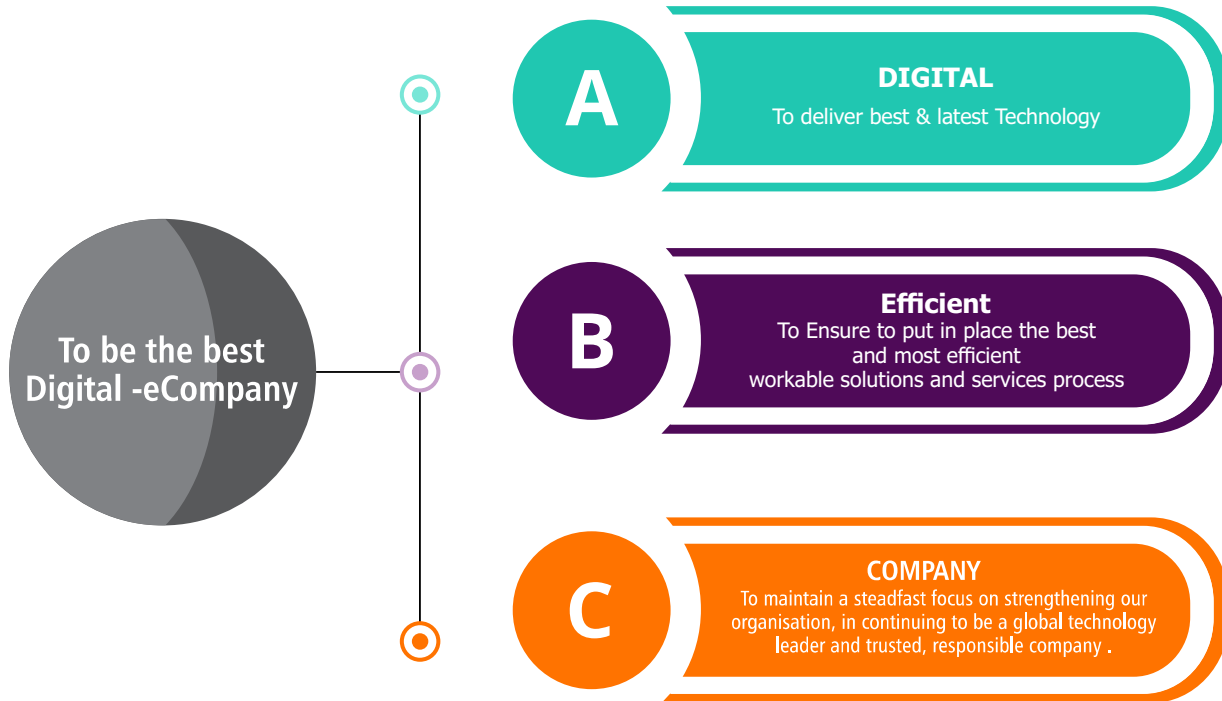
WHY MAGNUM

- Pan-India presence with strong sales and service coverage
- Highly experienced and technically qualified pre-sales managers, project managers, and engineers
- Dedicated in-house service centre with qualified technicians capable of repairs up to PCB level
- Direct access to procure genuine spare parts from OEMs
- Dedicated customer care and service support team with toll-free assistance
- More than 35 years of experience in executing projects of varying scale and complexity
- Expertise in project design, BOQ preparation, and timely execution of projects.



OUR VISION AND MISSION

With the power of magnum's team of talented people, we are able to provide customers with superb value, high quality, relevant technology, superior service and support and products and services



AREA OF OPERATIONS

- **CCTV SURVEILLANCE**
- **ACCESS CONTROL & TIME AND ATTENDANCE**
- **INTELLIGENT ENTRANCE MANAGEMENT SOLUTION**
- **FIRE ALARM SYSTEM**
- **IT INFRASTRUCTURE SOLUTIONS**
- **FIDS (FLIGHT INFORMATION DISPLAY BOARD)**
- **VIDEO WALL SOLUTION (ACTIVE LED) WITH VIDEO SURVEILLANCE SECURITY**

CCTV SURVEILLANCE

SECURITY PARTNERS: HANWHA VISION, PANASONIC, HONEYWELL, BOSCH

- Design, supply, installation, and maintenance of advanced IP-based CCTV surveillance systems across Pan India.
- Deployment of AI-powered video analytics for real-time intrusion alerts, facial recognition, crowd monitoring, and fire and smoke detection.
- Implementation of ANPR (Automatic Number Plate Recognition) systems for vehicle tracking, access control, parking management.
- End-to-end installation and integration of Fiber optic backbone infrastructure for high-speed and reliable surveillance communication networks.
- Design and management of secure wired, wireless, and enterprise Wi-Fi networking solutions for surveillance.
- Centralized command-and-control monitoring solutions with real-time video management, remote access, event-based alerts, and intelligent dashboard reporting.
- Integration of cloud-enabled CCTV systems with edge AI computing, centralized storage, disaster recovery, and automated data backup solutions.
- Smart surveillance solutions integrated with IoT sensors, access control systems, biometric attendance, fire alarms, and building management systems (BMS).
- Deployment of video management systems (VMS), network video recorders (NVR), and scalable data centre storage architectures.
- Preventive maintenance, remote health monitoring, technical support services across multiple locations.



VIDEO WALL SOLUTION & VIDEO SURVEILLANCE SECURITY

Video Wall Solution Partners: XTREME MEDIA

Video Wall Surveillance Security: Milestone, Genetec

- Design, supply, and deployment of high-performance Active LED Video Wall Solutions for Security Command Centres, Airports, Smart Cities, and Enterprise Monitoring.
- Seamless integration of Video Wall systems with leading Video Management Platforms including Milestone XProtect and Genetec Security Centre for centralized surveillance and real-time monitoring.
- Advanced visualization solutions supporting live CCTV feeds, AI-based analytics, ANPR alerts, facial recognition events, incident dashboards, and multi-screen situational awareness.
- Deployment of scalable and redundant video processing infrastructure with centralized control, remote management, failover capability and operation support.
- End-to-end integration with CCTV, Access Control, Intrusion Detection, Fire Alarm, and Building Management Systems (BMS) for unified security operations and intelligent decision-making.



ACCESS CONTROL

ACCESS CONTROL OFFICIAL PARTNERS: SUPREMA, HONEYWELL, SMART -I

- Design, supply, installation, and maintenance of advanced Access Control and Attendance Management Systems for enterprise environments.
- Deployment of Face Recognition and multi-modal authentication including RFID, fingerprint, mobile credentials, and PIN access.
- Seamless integration with HRMS, ERP, payroll systems, Darwin box, and Active Directory (AD/ADID) platforms.
- Centralized attendance management with real-time synchronization across branches and remote locations.
- Automated workforce management including shift planning, leave tracking, overtime calculation, and payroll-ready reports.
- Integration with boom barriers, turnstiles, flap barriers, visitor management, elevators, and fire systems.
- Smart access control with anti-pass back, time-based access policies, and role-based security permissions.



SUPREMA



HONEYWELL



SMART-I

INTELLIGENT ENTRANCE MANAGEMENT SOLUTIONS

FLAP BARRIER AND TURNSTILES PARTNERS: ENTRADO, WISE NEOSCO AND MAGNETIC

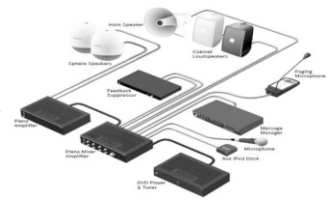
- Our solutions include Flap Barriers, Swing Barriers, and Turnstiles and are seamlessly integrated with RFID, biometric, and facial recognition technologies to create a secure and efficient access control ecosystem.
- Designed to automate employee attendance, visitor management, and access authorization through a single unified platform.
- Provides real-time monitoring, centralized administration, and detailed reporting for enhanced operational control.
- Ensuring smooth pedestrian flow while maintaining the highest standards of security and compliance, with dedicated wide-lane access gates designed for differently abled individuals, pregnant women, and users requiring enhanced accessibility
- Trusted by leading enterprises for secure, intelligent, and future-ready workplace access management.



PA SYSTEM

PA SYSTEM: BOSCH , AHUJA

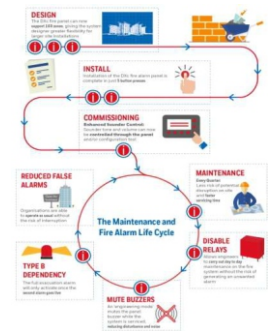
- A public address system (PA system) is an electronic sound amplification and distribution system with a microphone, amplifier and loudspeakers used to allow a person to address a large public.
For example : announcements of movements at large and noisy air and rail terminals or at a sports stadium.
- PA systems are often used in small venues such as school auditoriums, churches etc. PA systems with many speakers are widely used to make announcements in public, institutional and commercial buildings and locations. Intercom systems, installed in many buildings, have microphones in many rooms allowing the occupants to respond to announcements.



FIRE ALARM SYSTEM

FIRE ALARM SYSTEM OFFICIAL PARTNERS: AGNI , MORLEY , GST , HONEYWELL , RAVEL

- A Fire Alarm System has a number of devices working together to detect and warn people through visual and audio appliances when smoke, fire, carbon monoxide or other emergencies are present. FA System is mandatory in all commercial & high rise buildings .
- In small places conventional fire alarm system is used .The whole area is divided into zones and as fire happens it displays the zone and sounds the hooter.
- In multi stories and big places addressable fire alarm system is used which in case of fire pin points the exact location of fire.



IT INFRASTRUCTURE SOLUTIONS

IT SOLUTION PARTNERS: D-LINK, ARUBA, CISCO, DELL, HP, SEAGATE, WD, NET GEAR, COMMSCOPE, VAL RACK, DYNAMIC

- Design and deployment of scalable Enterprise IT Infrastructure for corporate and multi-location environments.
- Secure LAN/WAN, Wi-Fi, and Fiber network infrastructure ensuring high availability and performance.
- Centralized IT monitoring with real-time alerts, automation, and remote support.
- Seamless integration of IT systems with CCTV, Access Control, HRMS, and biometric platforms.



CLIENTELE





Magnum Telesystem Private Ltd.

📞 +91-124-4999799, +91-124-4443823

📞 1800 117771 (Toll Free)

🌐 www.magnum.org.in

📍 **Corporate office** : Unit 1401, 1402 & 1403, Emaar The Palm Square Building,
Golf Course Extension Road, Sector 66, Gurugram, Haryana - 122002